

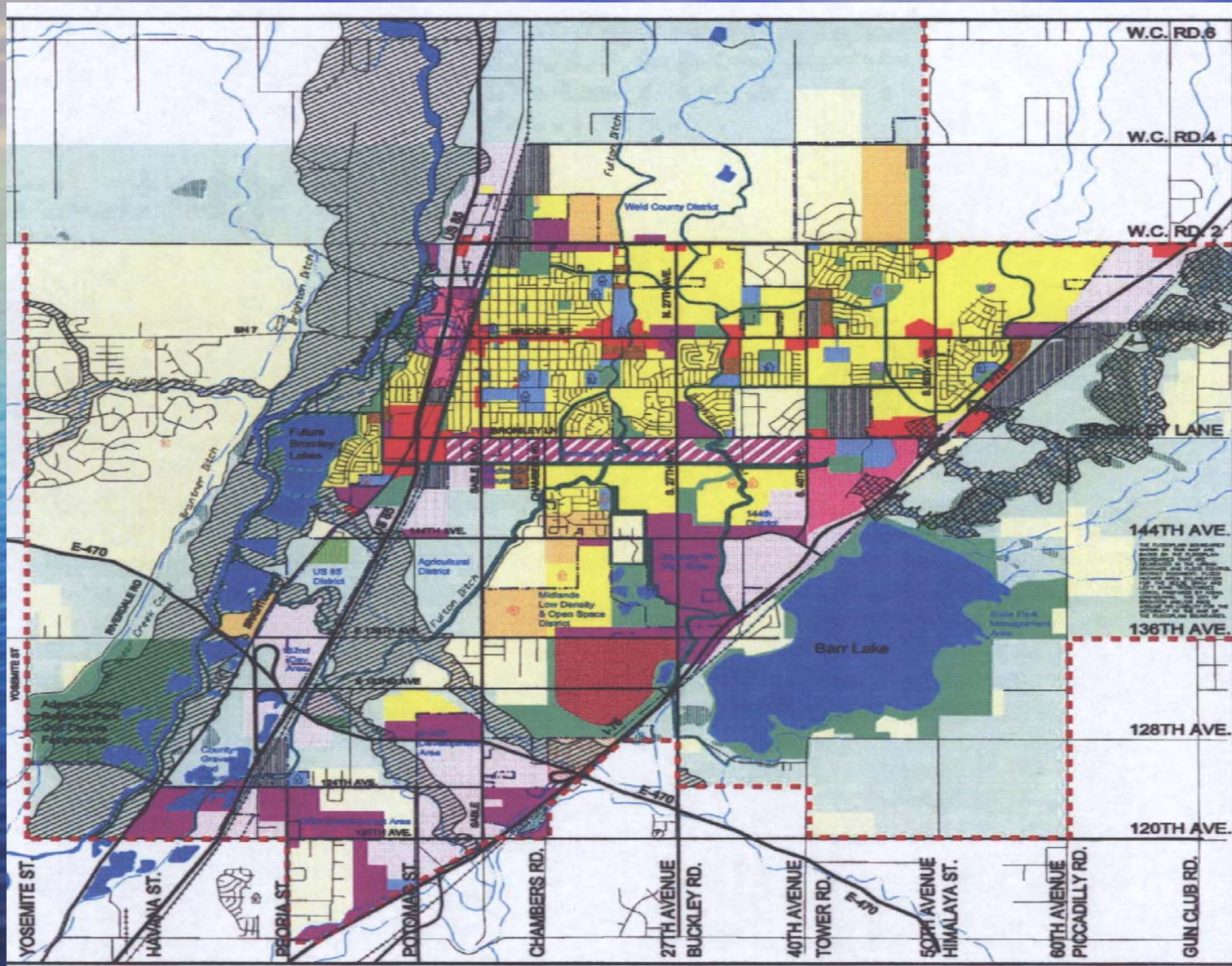
# **CITY OF BRIGHTON**



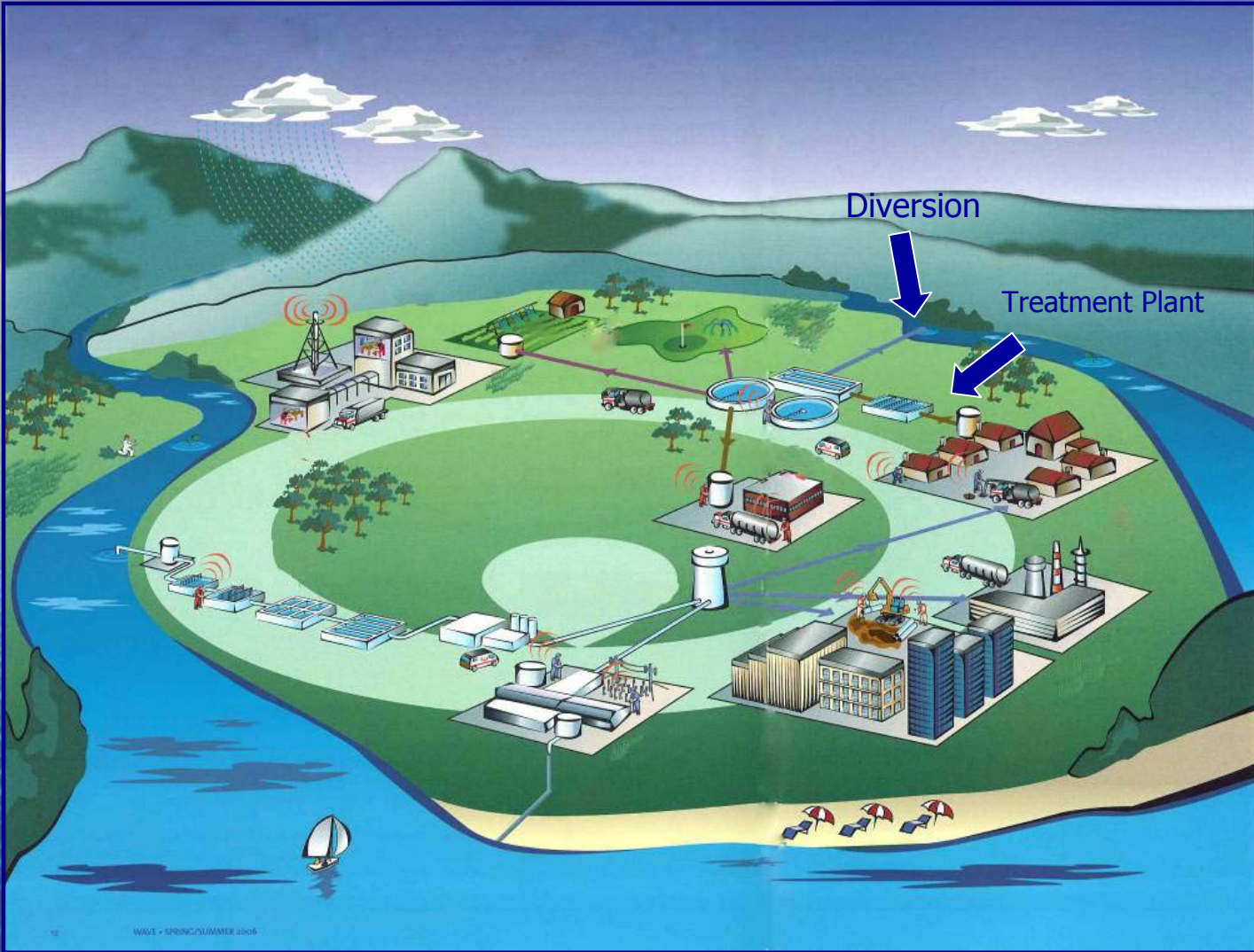
**WATER  
SYSTEM  
MANAGEMENT**



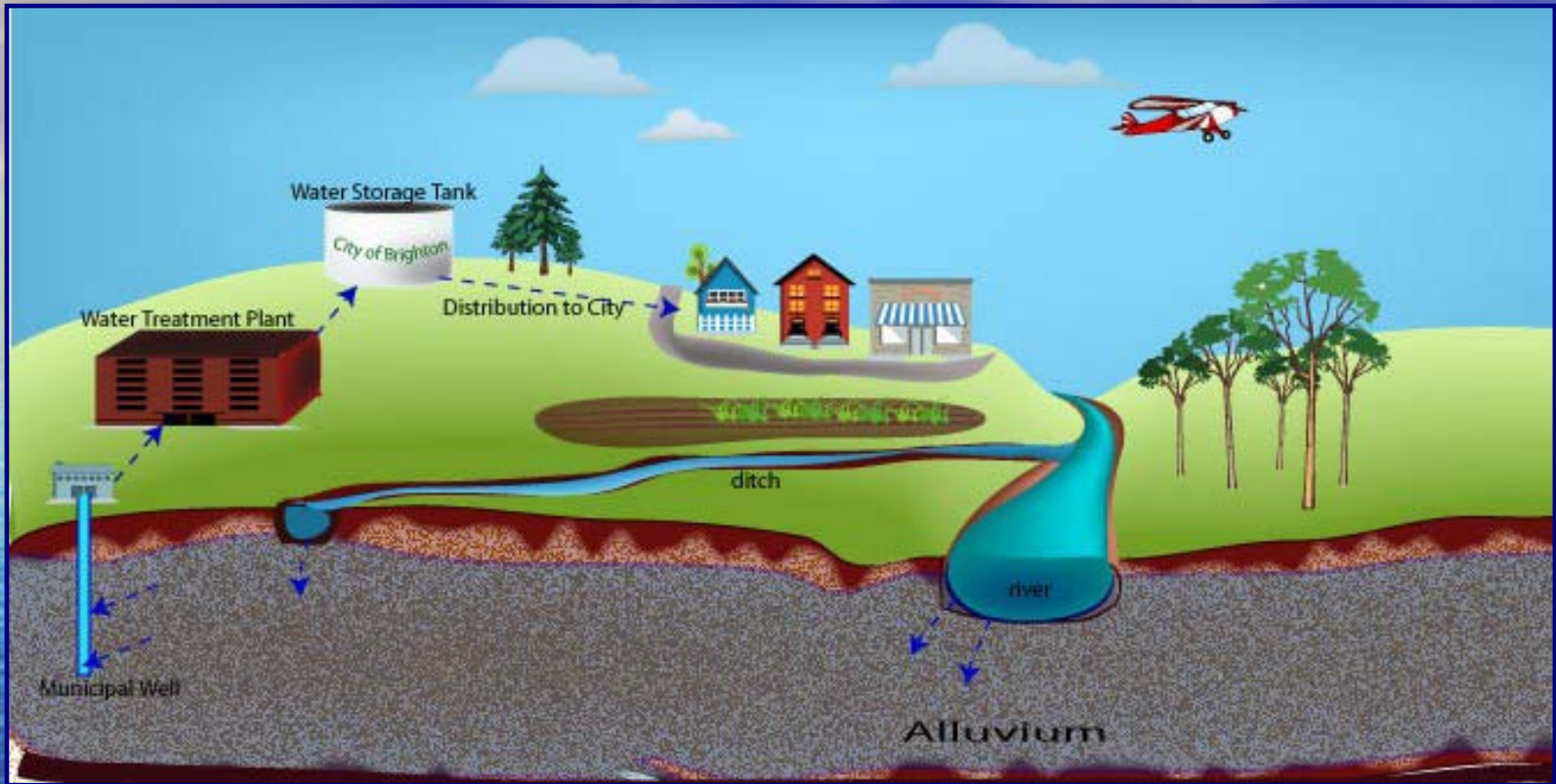
# Brighton Growth Area







Surface Water System

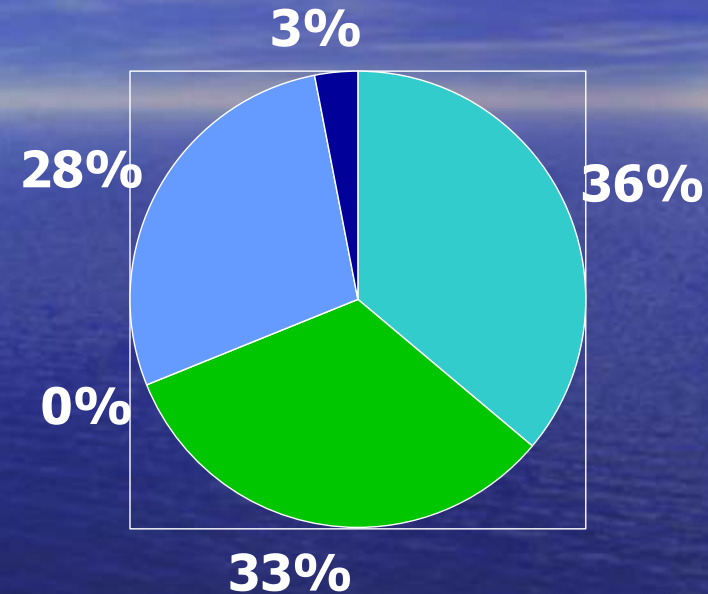


Ground Water System



# Water System Management

- WATER SUPPLY
  - GROUND WATER SUPPLY
    - 7 wells in South Platte
    - 3 wells in Beebe Draw
      - Source of supply
        - 69% leakage and irrigation flow
        - 28% seepage of South Platte River
        - 3% Lawn Irrigation Return Flow
      - Alluvial Aquifer
        - Deepest well is 62 feet deep
      - “lagged” effect for recharge of the river



- Fulton Ditch
- Brighton Lateral
- Irrigation return Flow
- South Platte River
- Alluvium Below Flood Plain

# Water System Management



## SWSI Participation

- Member of the South Platte basin roundtable
- Concerns with South Platte river basin and ability to meet demands
- Increasing supply needs with continued growth
- 65% growth increase in the South Platte basin (1.9 million people)
- H.B. 1177 participation
  - member of the Metro roundtable
  - Building on SWSI information
  - Project identification phase



# WATER SYSTEM MANAGEMENT

- WATER AUGMENTATION
  - REPLACEMENT TO THE RIVER (law requires it)
    - Prior Appropriations Doctrine (first in time = first in right)
  - AUGMENTATION PLAN DOCUMENT
    - 2000cw202
    - Filed in October 31, 2000
    - Approved July 10, 2007
  - DITCH SHARES
    - Fulton Ditch (1031.17 shares)
    - Burlington/Wellington (203.41)
    - Burlington/Barr (153.08)
    - FRICO/Barr (159.02)
    - FRICO/Milton (13)
    - Brighton Lateral (301.1075)
      - Carrying stock for Burlington/Wellington
  - South Park- Aurora Agreement
- STORAGE LAKES
  - Ken Mitchell Lake (9,100 acre feet of storage space)
  - 124<sup>th</sup> Lake (1,000 acre feet of storage space)
  - Chatfield Reservoir (1,425 acre feet)
  - Erger's Pond (2,200 acre feet)



# WATER SYSTEM MANAGEMENT

- WATER CONSERVATION

- Implemented mandatory watering schedules
- Soil amendments
- Design standards
- Xeriscape
- Sod restrictions
- Water Saving Appliance R



- *"Our role is to be good stewards of our water resources"*



# CITY OF BRIGHTON



**A Great Place to Call Your Home !**